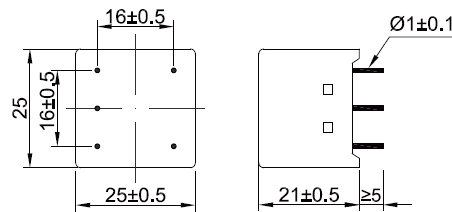


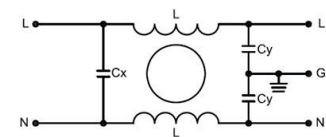
Series SM SE1000 Metal Printed Circuit Board EMI Filter



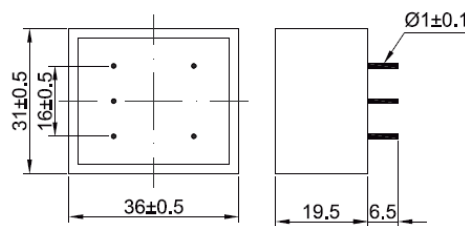
Rated voltage	120/250VAC
Rated current	1A-6A
Operating frequency	DC-60Hz
Temperature Range	HPF25/085/21
Test voltage(1min)	Line to Line 1450VDC
	Line to Ground 2000VDC

Printed Circuit Board(PCB) Mounting Filter
Metal Housing

Filter	Rated Current (A)	Rated Voltage(V)	Leakage Current (mA)	Input/Output Connections
SE1000-1-02	1A	120/250	0,5	Pin
SE1000-3-02	3A	120/250	0,5	Pin
SE1000-6-02	6A	120/250	0,5	Pin



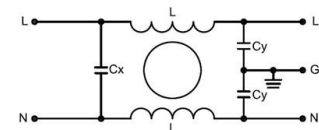
Series SM SE1001 Black Plastic PCB mounting Noise Filter



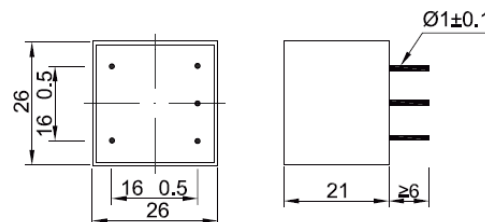
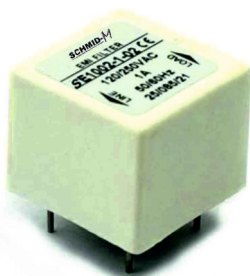
Rated voltage	120/250VAC
Rated current	1A-6A
Operating frequency	DC-60Hz
Temperature Range	HPF25/085/21
Test voltage(1min)	Line to Line 1450VDC
	Line to Ground 2000VDC

Printed Circuit Board(PCB) Mounting Filter
Blank Plastic Housing

Filter	Rated Current (A)	Rated Voltage(V)	Leakage Current (mA)	Input/Output Connections
SE1001-1-02	1A	120/250	0,5	Pin
SE1001-3-02	3A	120/250	0,5	Pin
SE1001-6-02	6A	120/250	0,5	Pin



Series SM SE1002 White Plastic Low Cost PCB-mounting Filter



Rated voltage	120/250VAC
Rated current	1A-6A
Operating frequency	DC-60Hz
Temperature Range	HPF25/085/21
Test voltage(1min)	Line to Line 1450VDC
	Line to Ground 2000VDC

Printed Circuit Board(PCB) Mounting Filter
White Plastic Housing

Filter	Rated Current (A)	Rated Voltage(V)	Leakage Current (mA)	Input/Output Connections
SE1002-1-02	1A	120/250	0,5	Pin
SE1002-3-02	3A	120/250	0,5	Pin
SE1002-6-02	6A	120/250	0,5	Pin

